

# East End Industrial Park – Site 1

Russellville, Arkansas

# Select Site Profile

60 acres

Your time and money are better spent on sites that have met our 50-point criteria for certification. We're sure you will be confident with the certainty and responsiveness **Select Site** offers your project.

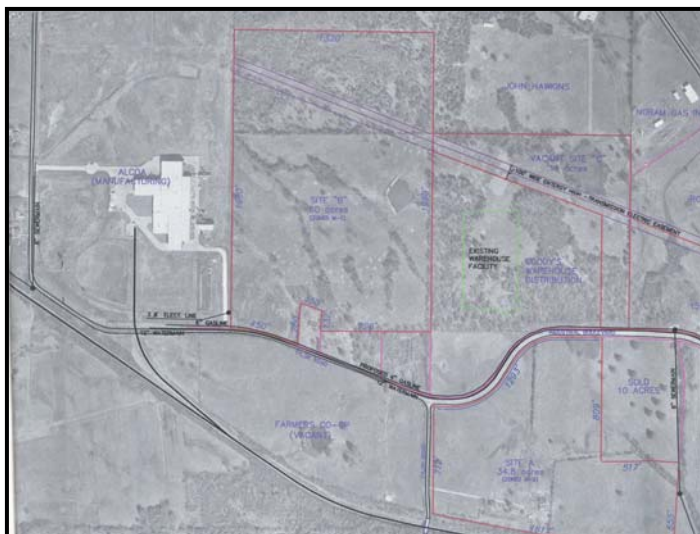


General Information & Site Characteristics	
Location:	Russellville
Previous Use:	Pasture
Fire Rating:	Class 4
Distance to Fire Station:	2 mi
Distance to Interstate or 4-Lane:	1.5 mi to I-40
Distance to Air:	83 mi to Little Rock National Airport
Distance to Rail:	0.25 mi

Taxes	
Sales Tax:	8.5%
Property Tax:	39.2 Mills/1,000 x 20%
Methods of Assessment:	Value x 20% x Millage = Annual Property Tax
State Taxation Summary:	Provided

Utilities
All local utility contact information provided. When applicable, service upgrade cost estimates and other developmental estimates are provided.

Environmental		Maps	
√	Wetlands Screening	√	Topographic
√	Floodplain Map	√	Utilities
√	Historical Survey	√	Surrounding Uses
√	Environmental Phase I	√	Road Infrastructure
√	Soils Report/Boring Logs	√	Easements
√	Water Table Depth	√	USGS Quadrangle
		√	Zoning



**For more information, please contact:**

Russell Harris or Chris Marsh  
 Entergy's Teamwork Arkansas  
**888.301.5861**  
[www.TeamworkArkansas.com](http://www.TeamworkArkansas.com)  
 or  
 Jeff Pipkin  
 Arkansas Valley Alliance for  
 Economic Development  
 479.858.6555